

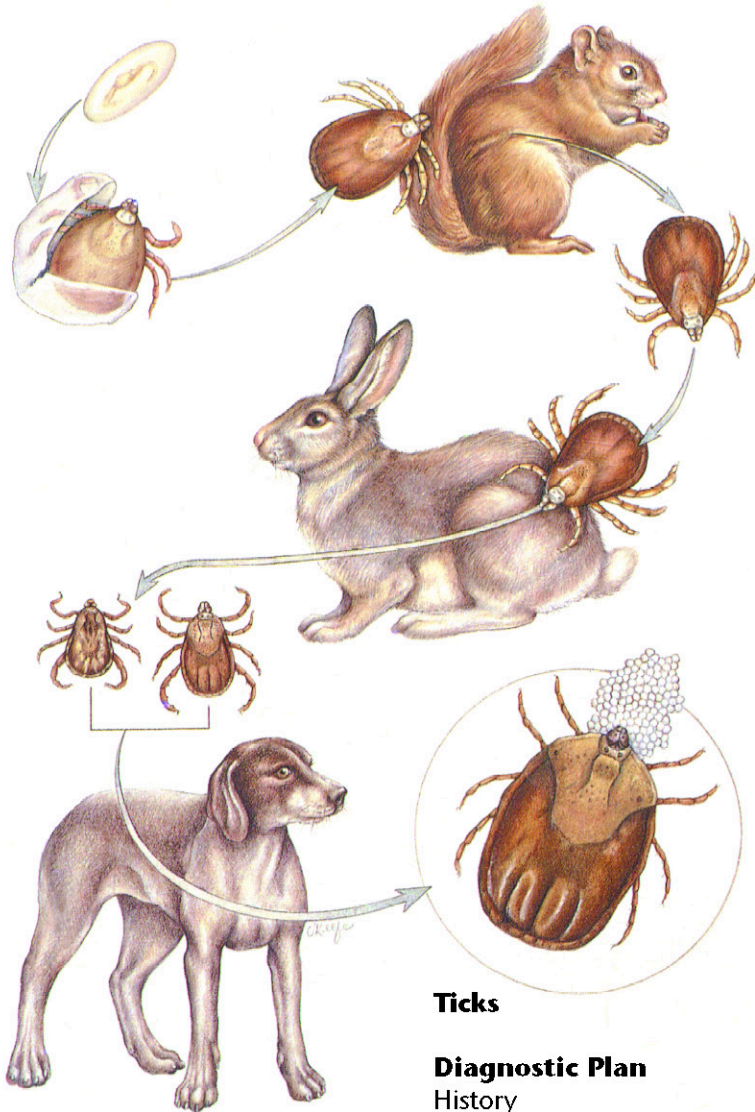
Adult ticks lay thousands of eggs, which undergo two molts: larva to nymph and nymph to adult.

Larvae, nymphs, and adults feed on blood and lymph.

Dermacentor variabilis larvae and nymphs feed on small mammals and drop off between molts.

Adults feed on pets.

Rhipicephalus sanguineus larvae, nymphs, and adults all feed on pets.



Ticks

Diagnostic Plan

History
Physical examination

Therapeutic Plan

Tick removal
Insecticide baths or dips
Topical insecticide dips or baths

Dietary Plan

A diet based on individual patient evaluation including body condition and other organ system involvement or disease