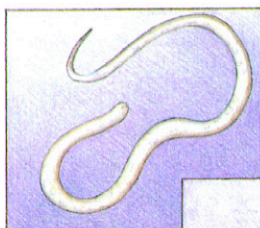
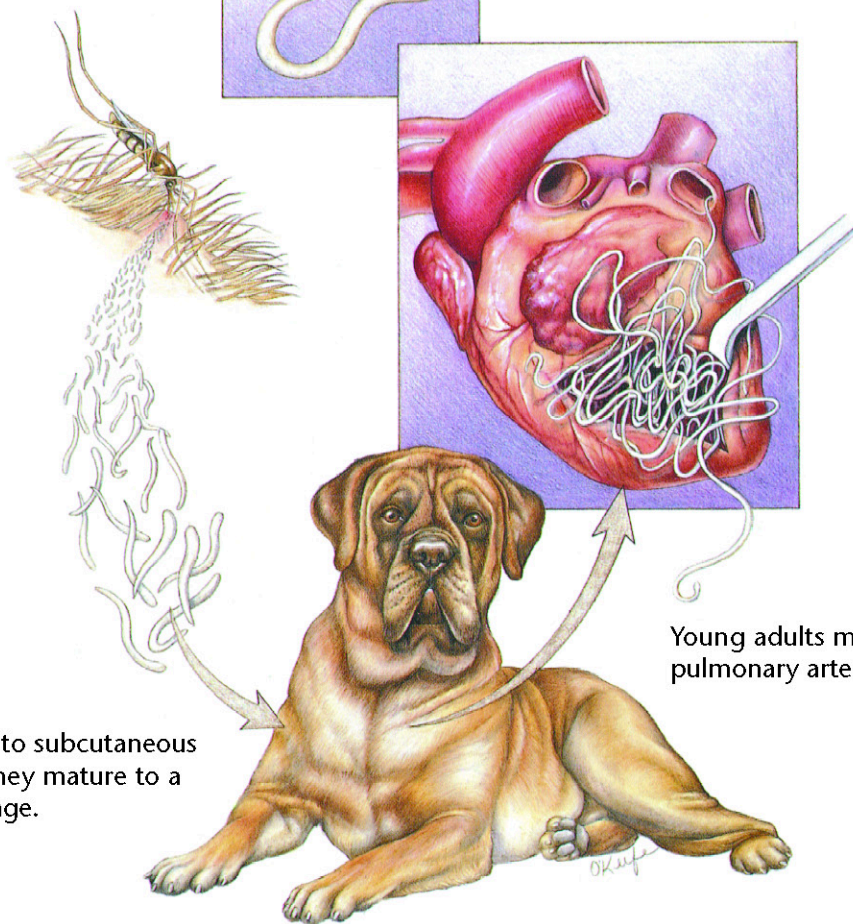


Infected mosquitoes deposit heartworm larvae into the animal's hemolymph by puncturing the animal's skin.



Mature females release microfilariae into the bloodstream where they are picked up by mosquitoes.



Larvae migrate to subcutaneous tissues where they mature to a young-adult stage.

Young adults migrate to the pulmonary arteries and heart.

Heartworms

Diagnostic Plan

History
Physical examination
Heartworm check
Chest x-rays
Blood work
Urinalysis

Therapeutic Plan

Drugs to kill adult worms
Aspirin
Corticosteroids
Restricted exercise
Drugs to kill larvae in the bloodstream
Prevention
Surgery

Dietary Plan

A diet with controlled levels of protein, phosphorus, and sodium
Consider body condition

