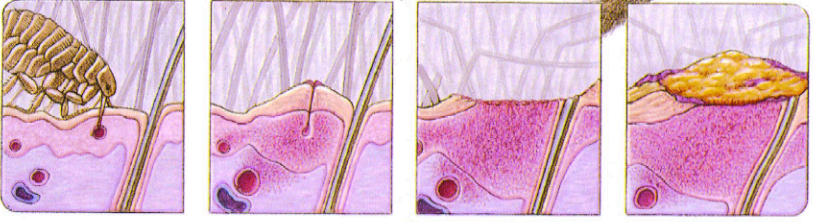




Self-inflicted trauma results in erythema, papules, pustules, crusts, and hair loss in areas where fleas feed.

Sequence of flea-allergy dermatitis



Flea punctures skin to feed.

Flea saliva sets up an antigen-antibody reaction.

Excoriation and inflammation result from self-inflicted trauma.

Acute bacterial infection results.

Flea-Allergy Dermatitis

Diagnostic Plan

- History
- Physical examination
- Detection of fleas, flea dirt, and tapeworm segments
- Intradermal skin testing

Therapeutic Plan

- Flea control
- Short-term corticosteroids

Dietary Plan

A diet adequate for tissue repair

